



CRIME TREND DASHBOARD – FEATURE SHEET

Crime Insight's Crime Trend Dashboard is customized to aggregate and display crime data in the ways you need it most—and most often.

Use the Crime Trend Dashboard's dynamic graphical displays to quickly and easily perform high-demand tasks:

- View state and agency-level data for specific crimes, including year-over-year or multi-year comparisons
- Generate trend analysis by type of offence
- Compare data across agencies



CRIME INSIGHT CRIME TREND DASHBOARD

Main Dashboard – State-Wide

Select date range

Select offense type

Choose to view state-wide or agency-specific data

View summary of top ten agencies with largest changes in crime rates

Mouse over agency name for summary information or click any agency name to drill-down to agency-specific data

Select number of years for year-over-year comparison

View visual summary of how major crime rates have changed over specified period

View month-by-month crime counts compared to the previous year in chart or numerical table format, or view multi-year comparisons

Montana Crime Trend Dashboard

Jurisdiction: Montana | Agency: 1 2 3 4 5 6 7 8 9 10 | Comparing Crimes Committed: Jan - May 2015 versus Jan - May 2014

Major Violent Crimes

- Murder: 42%
- Forcible Rape: 27%
- Aggravated Assault: 9%
- Robbery: 41%

Major Property Crimes

- Burglary: 22%
- Theft Offenses: 23%
- Motor Vehicle Theft: 19%

Other Significant Crimes

- Simple Assault: 22%
- Dmg Narcotic: 11%
- Weapon Law: 8%
- Domestic Violence: 28%
- DUI Arrests: 22%

Outliers

- Transfer of child articles re: common-law (2627): 300%
- Providing alcohol to an intoxicated person (2252): 200%

All Offenses

Agencies with Largest Change

Agency	Change	% Change
Musselshell Sheriff's Office	55	60%
Roosevelt Sheriff's Office	94	58%
Polson Police Department	124	35%
Sidway Police Department	71	33%
Montana State University Police Department	56	24%
Cascade Sheriff's Office	63	22%
Flathead Sheriff's Office	241	22%
Bayville Sheriff's Office	80	22%
Hallquist Police Department	140	13%
Havre Police Department	56	7%

Month-by-Month Crime Counts versus Previous Year

Chart: 2015 (blue), Previous Year (orange)

Main Dashboard – Agency Specific

Select date range

Select Agency

Select number of years for year-over-year comparison

Click to view data by offence type

View agency rank relative to state-wide crime rate

View month-by-month crime counts compared to the previous year in chart or numerical table format, or view multi-year comparisons

Crime Trend Dashboard for Agency - Musselshell Sheriff's Office

Jurisdiction: Montana | Agency: 1 2 3 4 5 6 7 8 9 10 | Comparing Crimes Committed: Jan - May 2015 versus Jan - May 2014

Major Violent Crimes

- Murder: 0%
- Forcible Rape: 0%
- Aggravated Assault: 533%
- Robbery: 0%

Major Property Crimes

- Burglary: 17%
- Theft Offenses: 37%
- Motor Vehicle Theft: 100%

Other Significant Crimes

- Simple Assault: 0%
- Dmg Narcotic: 73%
- Weapon Law: 0%
- Domestic Violence: 100%
- DUI Arrests: 125%

Outliers

- Theft of identity, fraud (1143): 500%
- Theft of belongings from motor vehicles (0643): 300%

Agency Rank - Average Annualized Crime Rate

Jan - May 2014 through Jan - May 2015

Chart: Agency Rank Relative to State (-100 to 100)

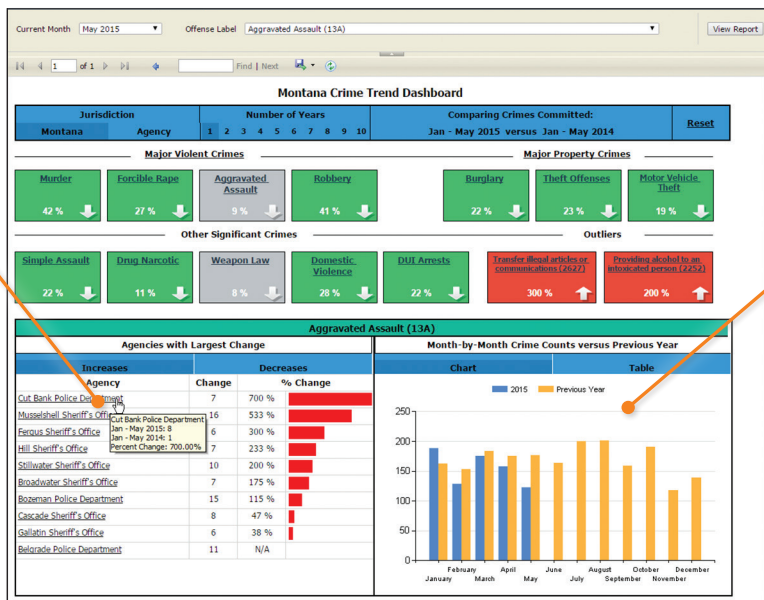
- Aggravated Assault (13A): -
- Burglary/Breaking & Entering (220): -
- Driving Under the Influence (90D): +
- Forcible Rape (11A): +
- Motor Vehicle Theft (240): +
- Simple Assault (13B): -

Crime Counts: All Offenses

Month-by-Month versus Previous Year

Chart: 2015 (blue), Previous Year (orange)

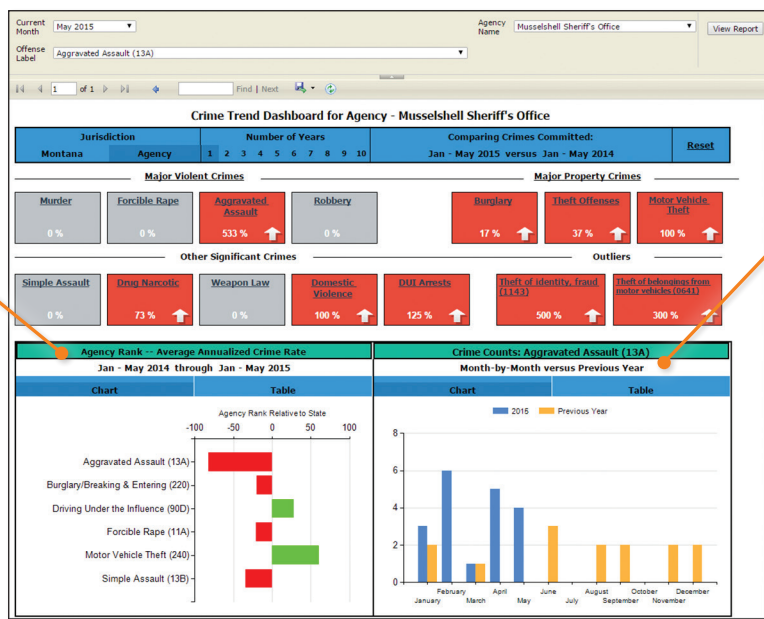
Offence Type Dashboard – State-Wide



View summary of top ten agencies with largest changes in crime data and hover over or click-through for more details

View month-by-month crime counts by offence type, compared to the previous year, in chart or numerical table format, or view multi-year comparisons

Offence Type Dashboard – Agency-Specific



View agency rank relative to state-wide data

View month-by-month crime counts by offence type, compared to the previous year, in chart or numerical table format, or view multi-year comparisons